

# Accessibility in the Webex App

Collaboration that works for everyone

The key purpose of any collaboration tool is to bring together people to make work happen.

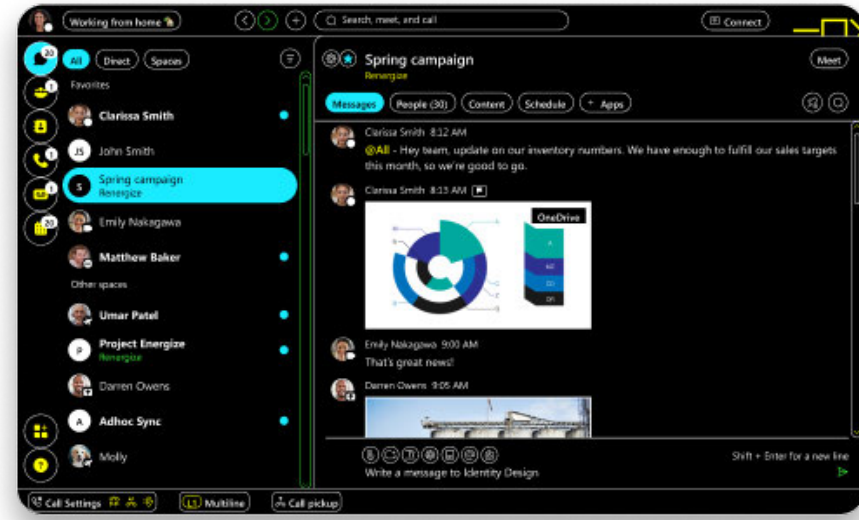
As businesses begin to adopt a hybrid work model and build a more diverse workforce, they need to ask themselves 'Is our solution able to adapt to everyone?' and 'Does everyone have an equal opportunity to be part of the conversation?'

At Webex, we build and continuously improve our collaboration solutions with accessibility, usability, and inclusivity at the forefront.



## Check out our top 5 feature enhancements for those with visual and hearing disabilities

The Webex team has made major enhancements and innovations to ensure every user feels like they have an equal opportunity to contribute to their workplace, regardless of their physical abilities.

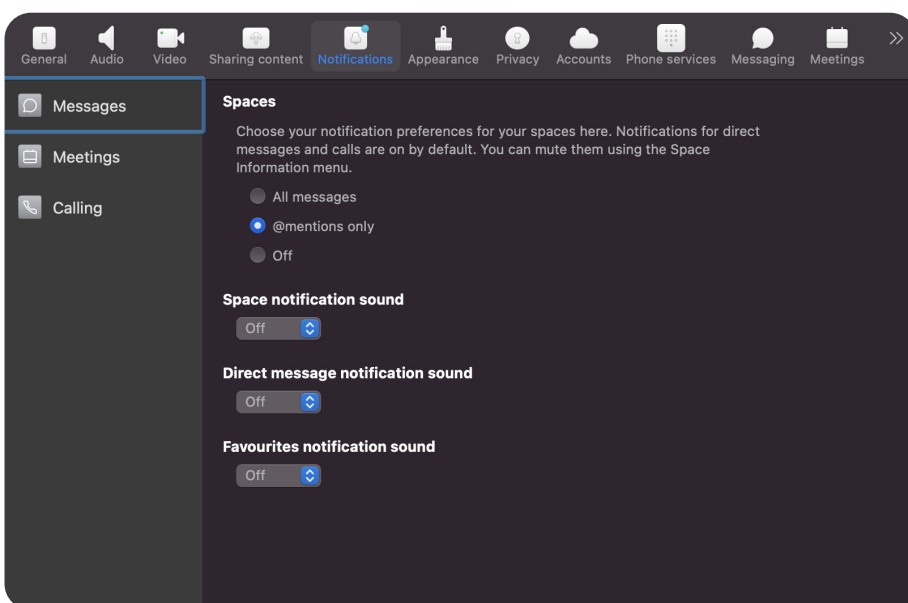
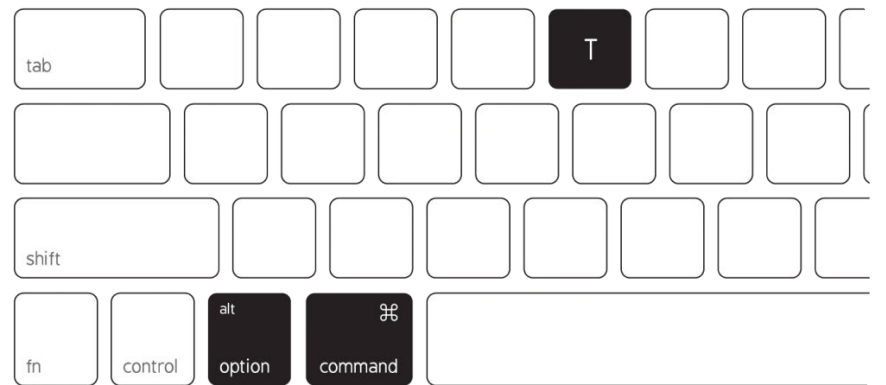


### High contrast mode

High contrast mode allows users to customise and simplify the display settings to use high contrast or custom colors. The Webex App supports your current Windows/Mac high contrast settings so you can quickly work how you like.

### Keyboard shortcuts

This feature is ideal for our keyboard power users, and those keen to learn how to navigate through the Webex App quickly. All major actions within the app can be carried out directly on the keyboard. To make things easier we also included the keyboard shortcut panel where users can view the most common shortcuts or search for specific actions.

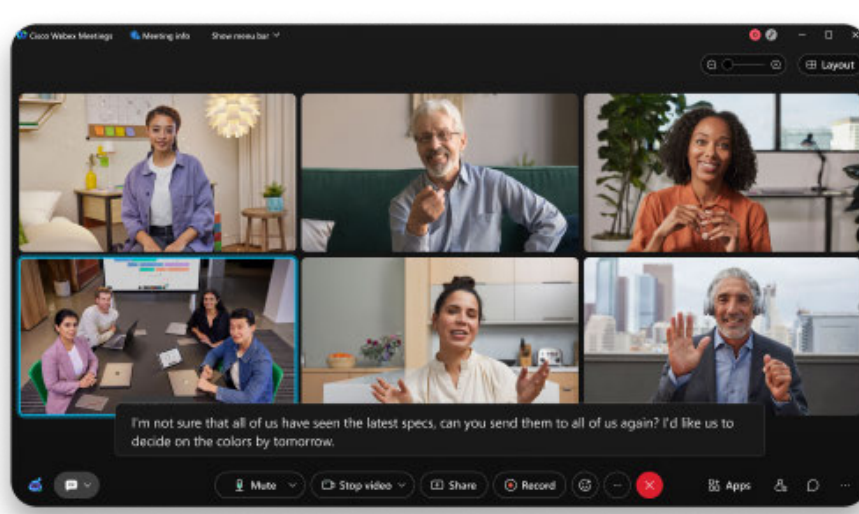
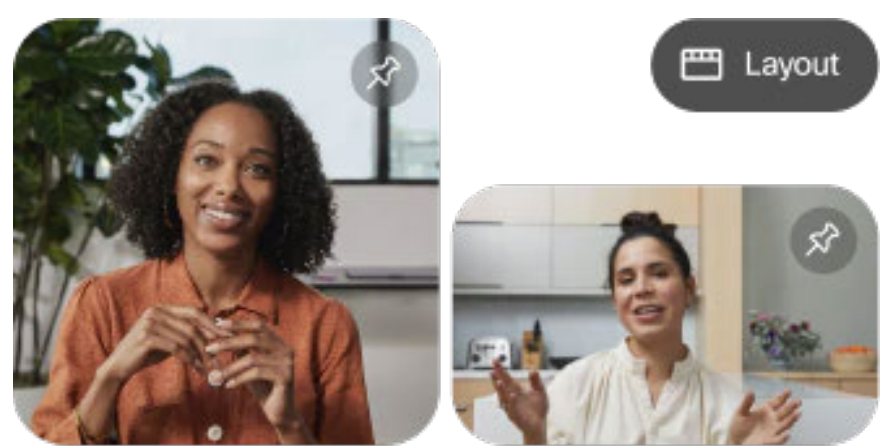


### Custom notifications

Visually impaired users often utilize audio notifications in Webex so they don't miss important messages, calls, and meetings, but they can sometimes get overwhelming and distracting. Webex now provides a more granular level of control over notifications so users can customize sounds by specific users, mute notifications for certain contacts and groups, and set their status to do not disturb when they don't want any distractions.

### Custom layouts

Webex has introduced customizable stage layouts. With this feature any meeting attendee can drag and drop anyone's video on the stage along with shared content and active speakers. This allows users with sight issues to lock key screen in place so they can stay focused and engaged.



### Closed captions

To ensure our users with hearing impairments can participate and stay engaged in meetings, Webex has introduced closed captioning. Real-time captions can be enabled by any user at any time during a meeting.

**With Webex everyone has equal experiences and opportunities. Teams are connected and barriers are removed.**

[Learn more](#)