

Hey, I'm a Webex Share device, see what I can do



Share your devices screen on any display

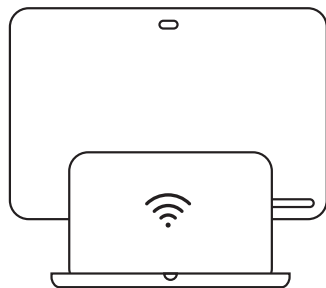
Cisco Webex Share is a palm-sized device that plugs into the HDMI port on your display, to turn it into a wireless presentation screen with the Webex Meetings app.

Connect wirelessly to a monitor, display, or TV

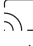
STEP 01

Open the Cisco Webex Meetings app on your laptop or mobile device.

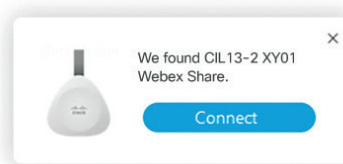
Automatic pairing starts.



STEP 02

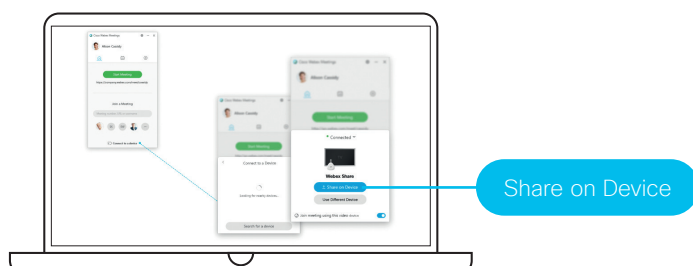
Select  **Connect to a device** and select the Webex Share device you'd like to use.

To connect to a Webex Share device during a meeting, select **Connect**.



STEP 03

Click **Share on Device**.



STEP 04

Click **Stop** to stop sharing.

